

This section provides direction for streets and parks building on the concepts and built work from previous streetscape improvements in Bala and Port Carling.

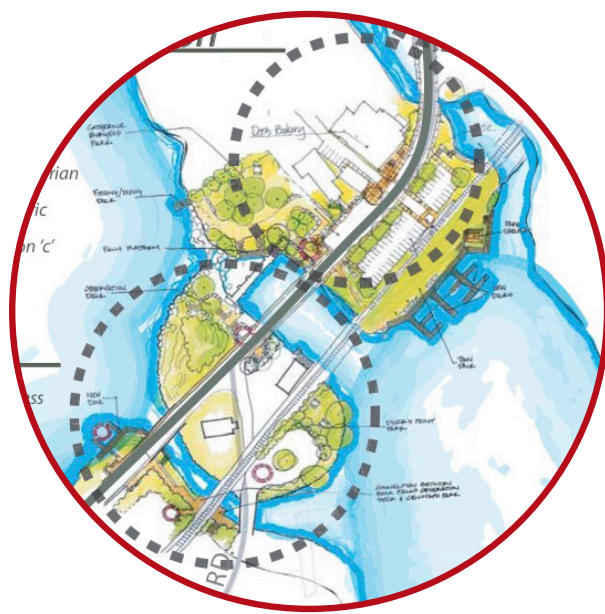
Street typologies are included for various segments of the streets. Illustrations provide a demonstration of new conditions with a priority placed on safe pedestrian access and enhanced landscape conditions through the Urban Centres.

Previous Streetscape Improvements

Streetscape improvements were implemented on Highway 169 north of the bridge and on Bala Falls Road and included enhancements to parking, addition of sidewalks, lighting and planting.

Bala

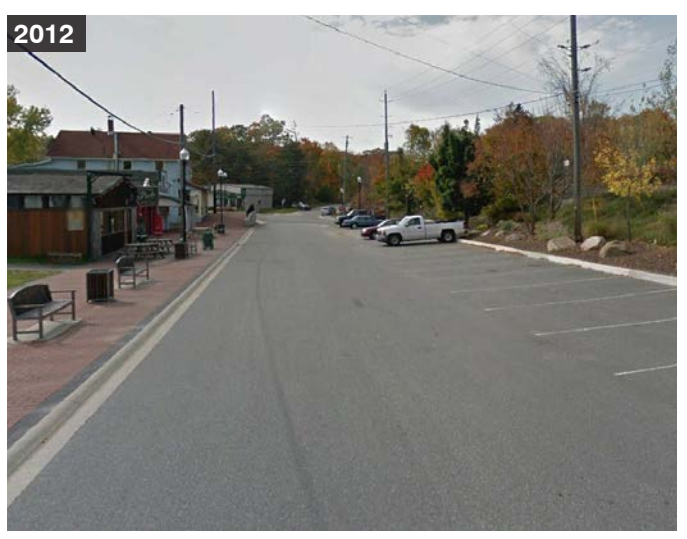
Bala Streetscape & Parking Improvement Plan (2008)

Streetscape Improvements (2008) - Highway 169 between Gordon St and River St



Streetscape Improvements (2008) - Bala Falls Road



Port Carling

Streetscape improvements were implemented in Port Carling on Medora Street and Maple Street. The District is currently preparing an Environmental Assessment for Highway 169 between Lock Street and Armstrong Road. A number of options are being evaluated.

Streetscape improvements were implemented in Port Carling based on the Streetscape Master Plan completed in 2006 and included terraced rock retaining walls, lighting, planting and re-organization of parking.

Port Carling Streetscape Master Plan (2006)



Medora Street Improvements (2009)



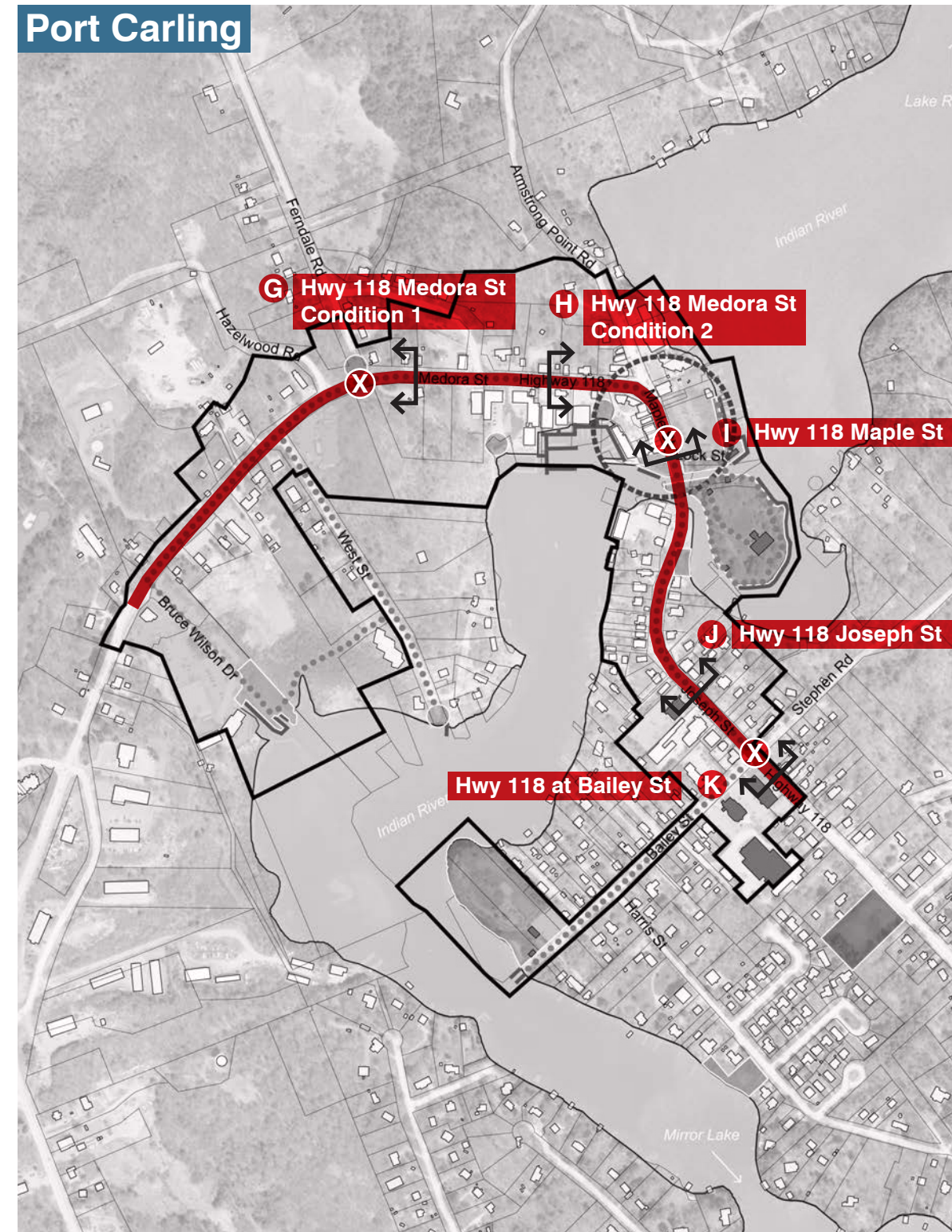
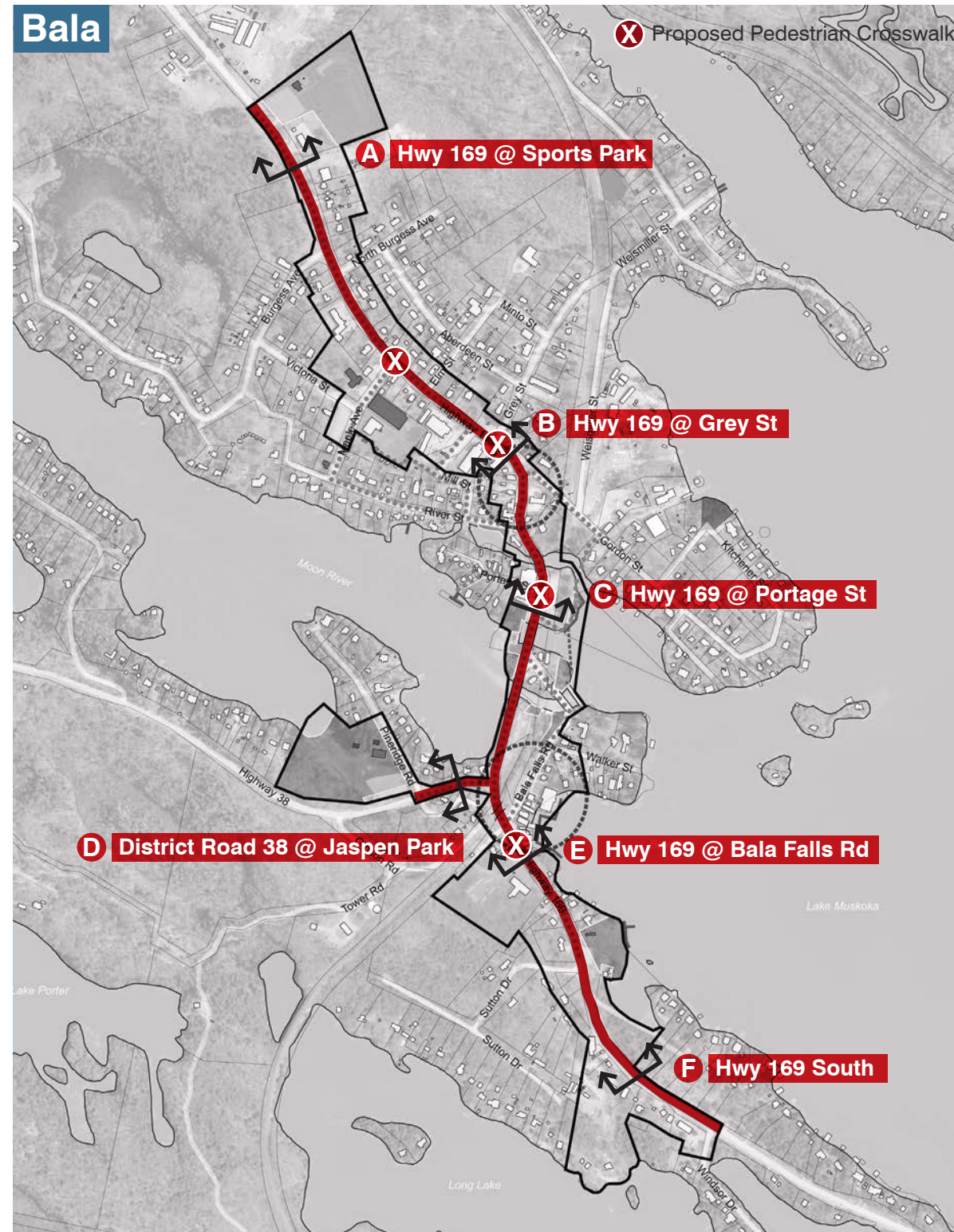
Maple Street Improvements (2009)



Proposed Street Conditions

A number of streetscape typologies provide direction for detailed planning and design that will be undertaken in the future as part of the District's plans for Highway 118 in Port Carling and other

initiatives on Highways 169 and 38. The final location of crosswalks will be confirmed through discussions with the District.



Bala

A Highway 169 at Muskoka Lakes Sports Park

Travel Lanes

No change is proposed to travel lane widths.

Streetscape

Additional trees should be added on private property wherever possible in consultation with adjacent owners.

Sidewalk

A new sidewalk is proposed on the east side of Highway 169, subject to the following guidelines:

- Sidewalk should have a minimum clearway of 2.1 metres (wherever possible).
- Sidewalk material should be differentiated from the road surface material.
- Sidewalk treatment should cross all driveways and access roads that are not public streets.

- At intersections with public streets and highways pedestrian crossing lines should be painted across the intersection.

Crosswalks

No crosswalks are proposed in this area.

Site Furnishings

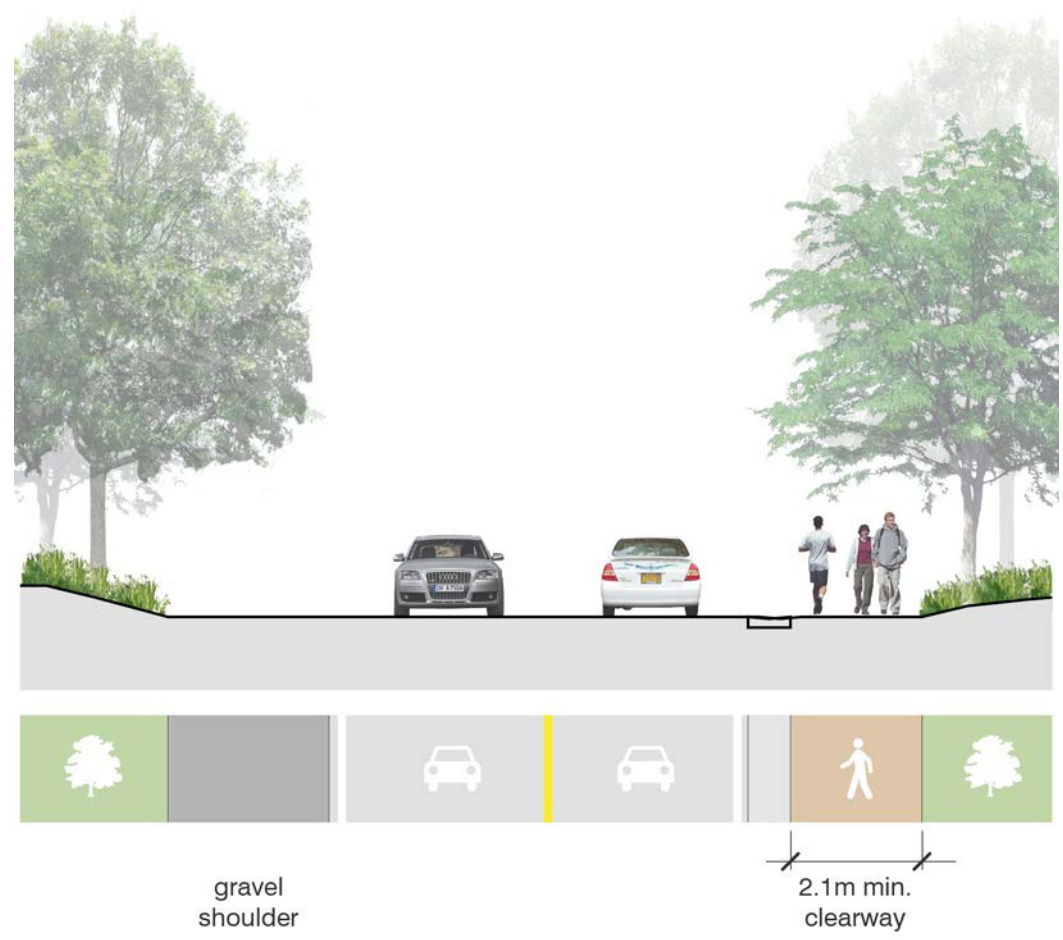
Muskoka chairs, benches and waste receptacles should be added.

Dark Sky Friendly Lighting

Dark sky friendly pedestrian scale lighting should be added.



Photomontage illustrating proposed improvement to Highway 169 at Muskoka Lakes Sports Park



B Highway 169 Bridge at Grey Street

Travel Lanes

No change is proposed to travel lane widths.

Streetscape

Additional trees should be added on private property wherever possible in consultation with adjacent owners.

Sidewalk

New sidewalks are proposed on both sides of Highway 169, subject to the following guidelines:

- Sidewalk should have a minimum clearway of 2.1 metres (wherever possible).
- Sidewalk material should be differentiated from the road surface material.
- Sidewalk treatment should cross all driveways, parking areas, and access roads that are not public streets.

- At intersections with public streets and highways pedestrian crossing lines should be painted across the intersection.

Crosswalks

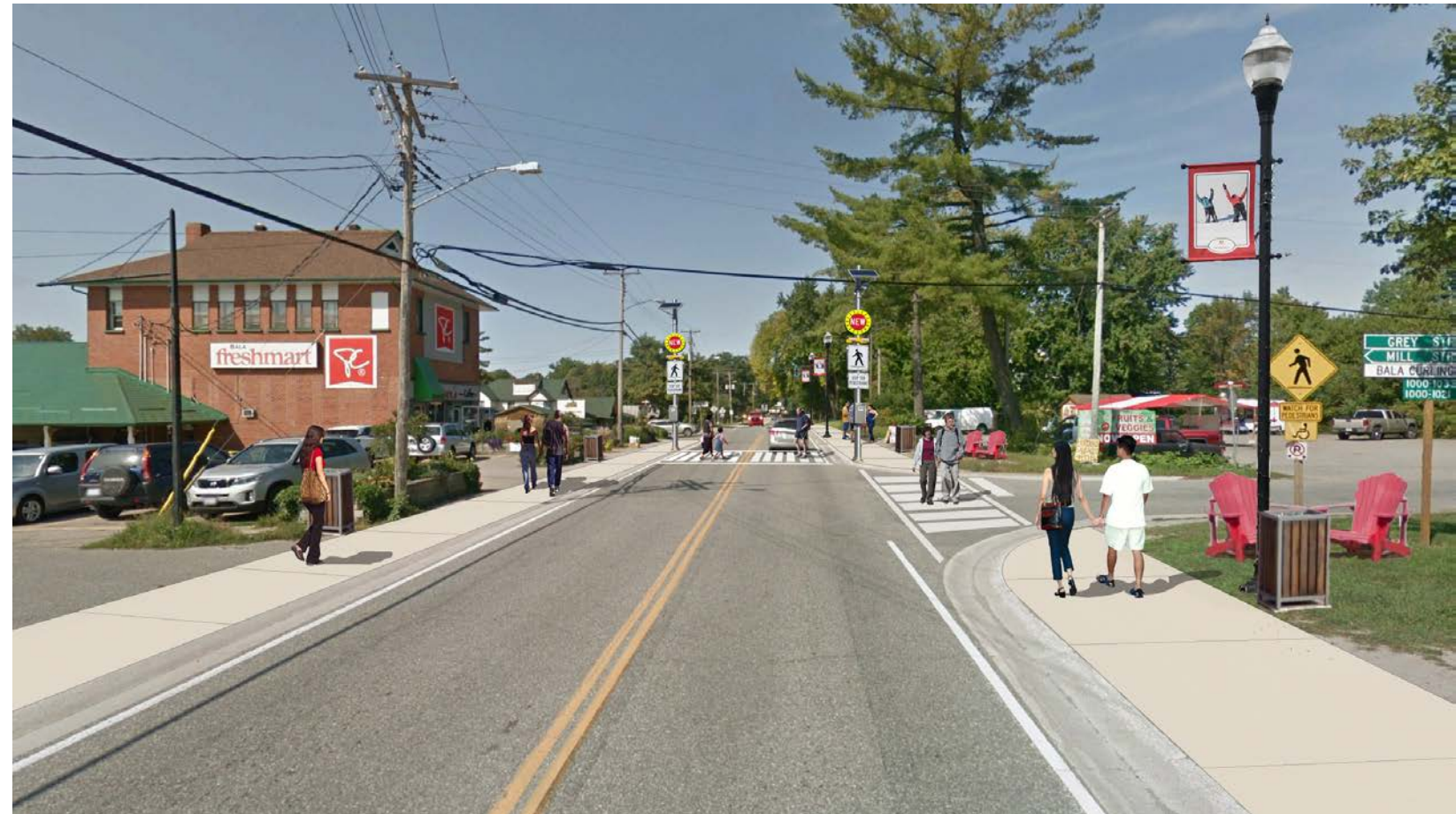
A pedestrian-activated crosswalk is proposed across Highway 169 at Grey Street. The crosswalk should be highly visible, include warning lights when activated, and meet all requirements of the District of Muskoka and the Highway Traffic Act.

Site Furnishings

Muskoka chairs, benches and waste receptacles should be added.

Dark Sky Friendly Lighting

Dark sky friendly pedestrian scale lighting should be added.



Photomontage illustrating proposed improvement to Highway 169 Bridge North of Portage Street



C Highway 169 Bridge at Portage Street

Travel Lanes

No change is proposed to travel lane widths.

Streetscape

Additional trees should be added on private property wherever possible in consultation with adjacent owners.

Sidewalk

New sidewalks are proposed on both sides of Highway 169, subject to the following guidelines:

- Sidewalk should have a minimum clearway of 2.1 metres (wherever possible).
- Sidewalk material should be differentiated from the road surface material.
- Sidewalk treatment should cross all driveways, parking areas, and access roads that are not public streets.

- At intersections with public streets and highways pedestrian crossing lines should be painted across the intersection.

Crosswalks

A pedestrian-activated crosswalk is proposed across Highway 169 at Portage Street. The crosswalk should be highly visible, include warning lights when activated, and meet all requirements of the District of Muskoka and the Highway Traffic Act.

Site Furnishings

Muskoka chairs, benches and waste receptacles should be added.

Dark Sky Friendly Lighting

Dark sky friendly pedestrian scale lighting should be added.



Photomontage illustrating proposed improvement to Highway 169 Bridge North of Portage Street



D District Road 38 towards Jaspén Park

Travel Lanes

No change is proposed to travel lane widths.

Streetscape

Additional trees should be added on private property wherever possible in consultation with adjacent owners.

Sidewalk

A new sidewalk is proposed on the north side of District Road 38 leading towards Pine Ridge Road and Jaspén Park, subject to the following guidelines:

- Sidewalk should have a minimum clearway of 2.1 metres (wherever possible).
- Sidewalk material should be differentiated from the road surface material.
- Sidewalk treatment should cross all driveways and access roads that are not public streets.

- At intersections with public streets and highways pedestrian crossing lines should be painted across the intersection.

Crosswalks

No crosswalks are proposed in this area.

Site Furnishings

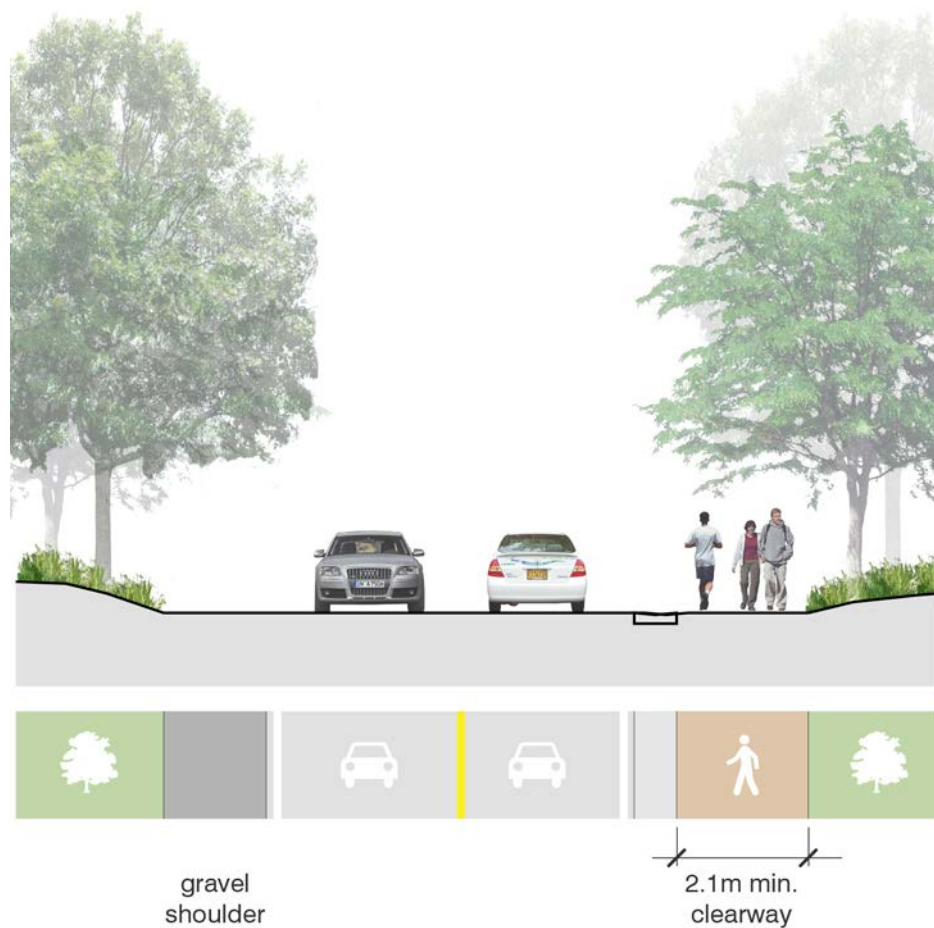
Muskoka chairs, benches and waste receptacles should be added.

Dark Sky Friendly Lighting

Dark sky friendly pedestrian scale lighting should be added.



Photomontage illustrating proposed improvement to Highway 38 towards Jaspén Park



E Highway 169 at Bala Falls Road

Travel Lanes

No change is proposed to travel lane widths.

Streetscape

Additional trees and plantings should be added on private property wherever possible in consultation with adjacent owners.

Sidewalk

New sidewalks are proposed on both sides of Highway 169, subject to the following guidelines:

- Sidewalk should have a minimum clearway of 2.1 metres (wherever possible).
- Sidewalk material should be differentiated from the road surface material.
- Sidewalk treatment should cross all driveways, parking areas, and access roads that are not public streets.

- At intersections with public streets and highways pedestrian crossing lines should be painted across the intersection.

Crosswalks

A pedestrian-activated crosswalk is proposed across Highway 169 at Bala Falls Road and Musquash Road. The crosswalk should be highly visible, include warning lights when activated, and meet all requirements of the District of Muskoka and the Highway Traffic Act.

Site Furnishings

Muskoka chairs, benches and waste receptacles should be added.

Dark Sky Friendly Lighting

Dark sky friendly pedestrian scale lighting should be added.



Photomontage illustrating proposed improvement to Highway 169 at Bala Falls Road



F South End of Highway 169

Travel Lanes

No change is proposed to travel lane widths.

Streetscape

Additional trees and plantings should be added on private property wherever possible in consultation with adjacent owners.

Sidewalk

A new sidewalk is proposed on the west side of Highway 169, subject to the following guidelines:

- Sidewalk should have a minimum clearway of 2.1 metres (wherever possible).
- Sidewalk material should be differentiated from the road surface material.
- Sidewalk treatment should cross all driveways and access roads that are not public streets.

- At intersections with public streets and highways pedestrian crossing lines should be painted across the intersection.

Crosswalks

No crosswalks are proposed in this area.

Site Furnishings

Muskoka chairs, benches and waste receptacles should be added.

Dark Sky Friendly Lighting

Dark sky friendly pedestrian scale lighting should be added.



Photomontage illustrating proposed improvement to the south end of Highway 169



Port Carling

G Medora Street (Highway 118) - Condition 1

Travel Lanes

No change is proposed to travel lane widths.

Streetscape

Additional trees and plantings should be added on private property wherever possible in consultation with adjacent owners.

On-street parking on both sides of Medora Street should be removed through this area to provide sidewalks on both sides. Consider including bollards to slow traffic coming over the hill and protect the sidewalks from attempts to park/stop vehicles.

Sidewalk

New sidewalks are proposed on both sides of Medora Street, subject to the following guidelines:

- Sidewalk should have a minimum clearway of 2.1 metres (wherever possible).

- Sidewalk material should be differentiated from the road surface material.
- Sidewalk treatment should cross all driveways, parking areas, and access roads that are not public streets.
- At intersections with public streets and highways pedestrian crossing lines should be painted across the intersection.

Crosswalks

No crosswalks are proposed in this area.

Site Furnishings

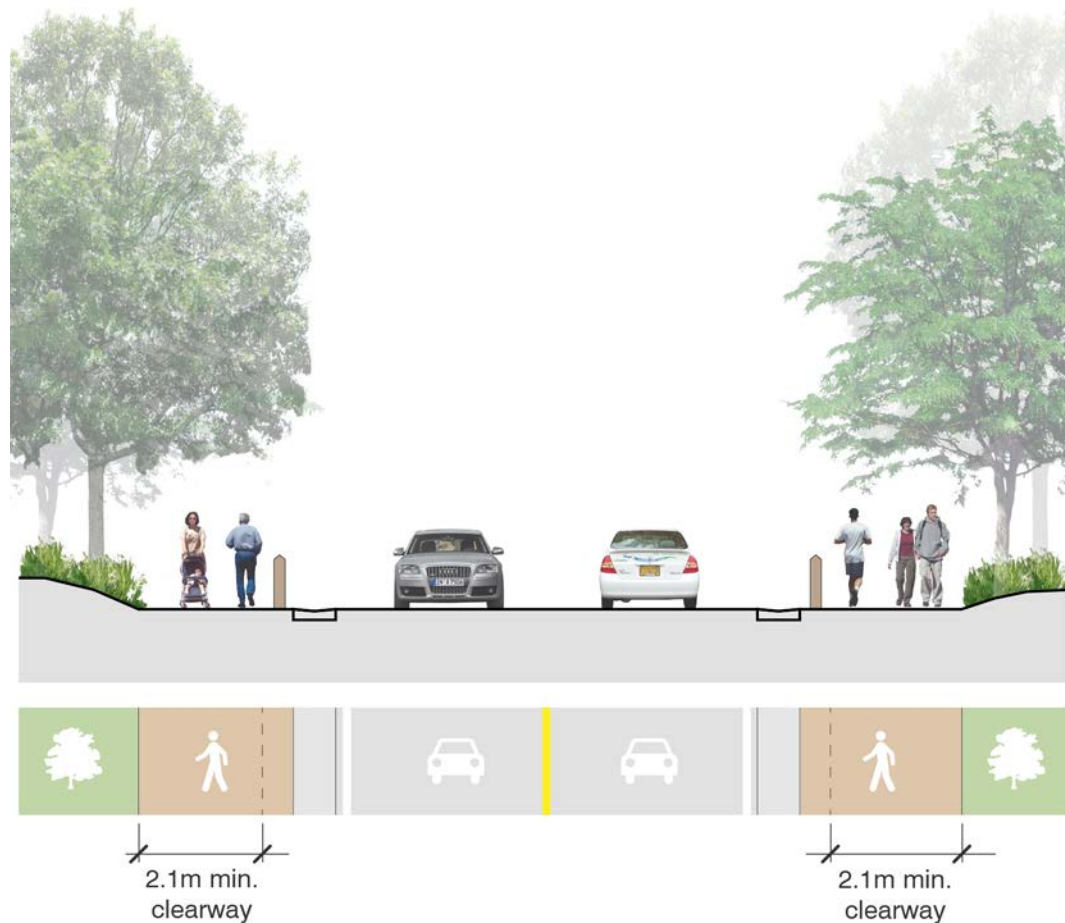
Muskoka chairs, benches and waste receptacles should be added.

Dark Sky Friendly Lighting

Dark sky friendly pedestrian scale lighting should be added.



Photomontage illustrating proposed improvement to Medora Street (Highway 118) - Condition 1



H Medora Street (Highway 118) - Condition 2

Travel Lanes

No change is proposed to travel lane widths.

Streetscape

Additional trees and plantings should be added on private property wherever possible in consultation with adjacent owners.

On-street parking on the south side of Medora Street should be narrowed to be a maximum of 2.25 metres to provide space for a new sidewalk. Where space is too limited to accommodate both, on-street parking should be removed.

Sidewalk

A new sidewalk is proposed on the south side of Medora Street, subject to the following guidelines:

- Sidewalk should have a minimum clearway of 2.1 metres (wherever possible).

- Sidewalk material should be differentiated from the road surface material.
- Sidewalk treatment should cross all driveways, parking areas, and access roads that are not public streets.
- At intersections with public streets and highways pedestrian crossing lines should be painted across the intersection.

Crosswalks

No crosswalks are proposed in this area.

Site Furnishings

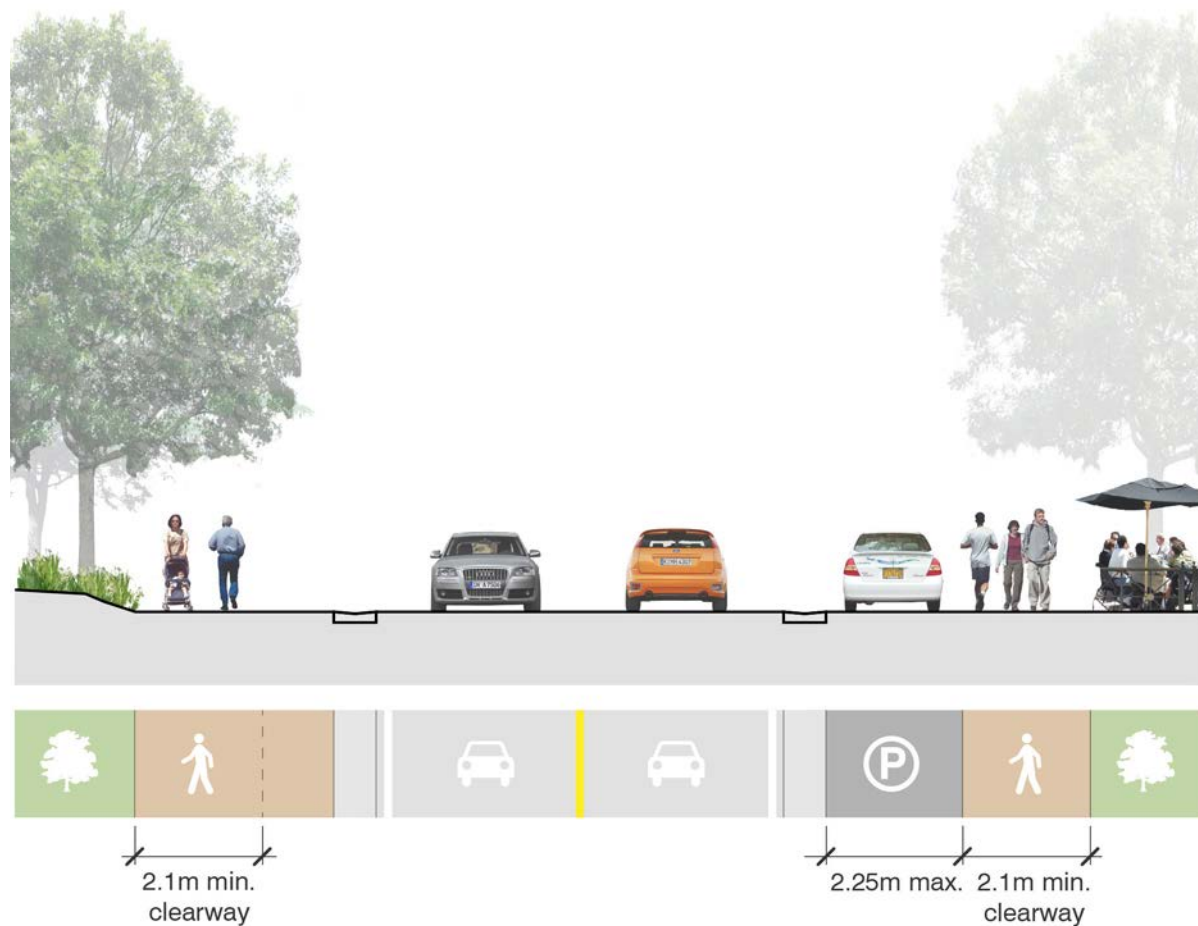
Muskoka chairs, benches and waste receptacles should be added.

Dark Sky Friendly Lighting

Dark sky friendly pedestrian scale lighting should be added.



Photomontage illustrating proposed improvement to Medora Street (Highway 118) - Condition 2



I Maple Street (Highway 118)

Travel Lanes

No change is proposed to travel lane widths.

Streetscape

Additional trees and plantings should be added on private property wherever possible in consultation with adjacent owners.

On-street parking on the east side of Maple Street is proposed to be converted into parallel (lay-by) parking to provide space for a new sidewalk.

Sidewalk

A new sidewalk is proposed on the east side of Maple Street, subject to the following guidelines:

- Sidewalk should have a minimum clearway of 2.1 metres (wherever possible).
- Sidewalk material should be differentiated from the road surface material.
- Sidewalk treatment should cross all driveways, parking areas, and access roads that are not public streets.

- At intersections with public streets and highways pedestrian crossing lines should be painted across the intersection.

Crosswalks

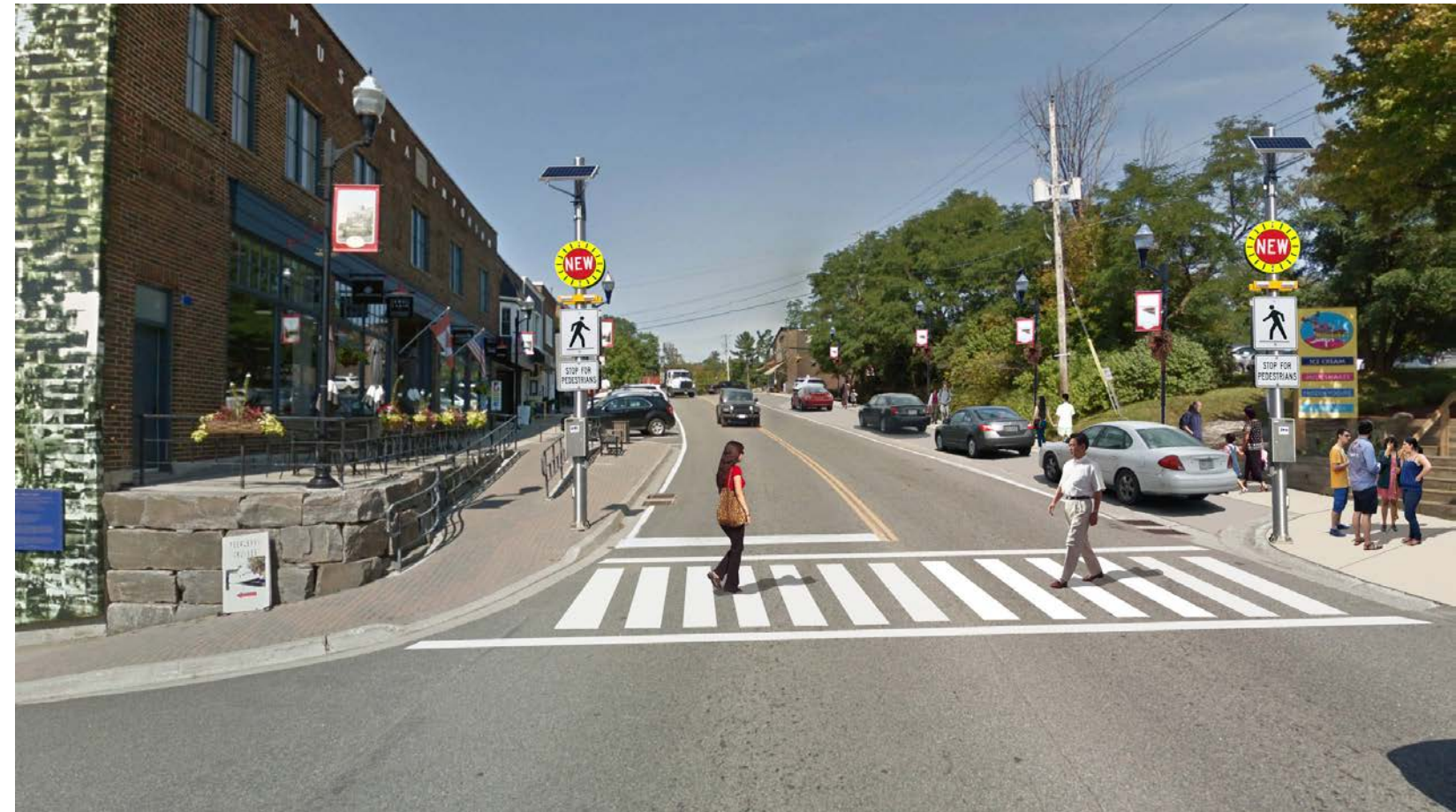
A pedestrian-activated crosswalk is proposed across Maple Street/Highway 118 at James Bartleman Way/Lock Street. The crosswalk should be highly visible, include warning lights when activated, and meet all requirements of the District of Muskoka and the Highway Traffic Act.

Site Furnishings

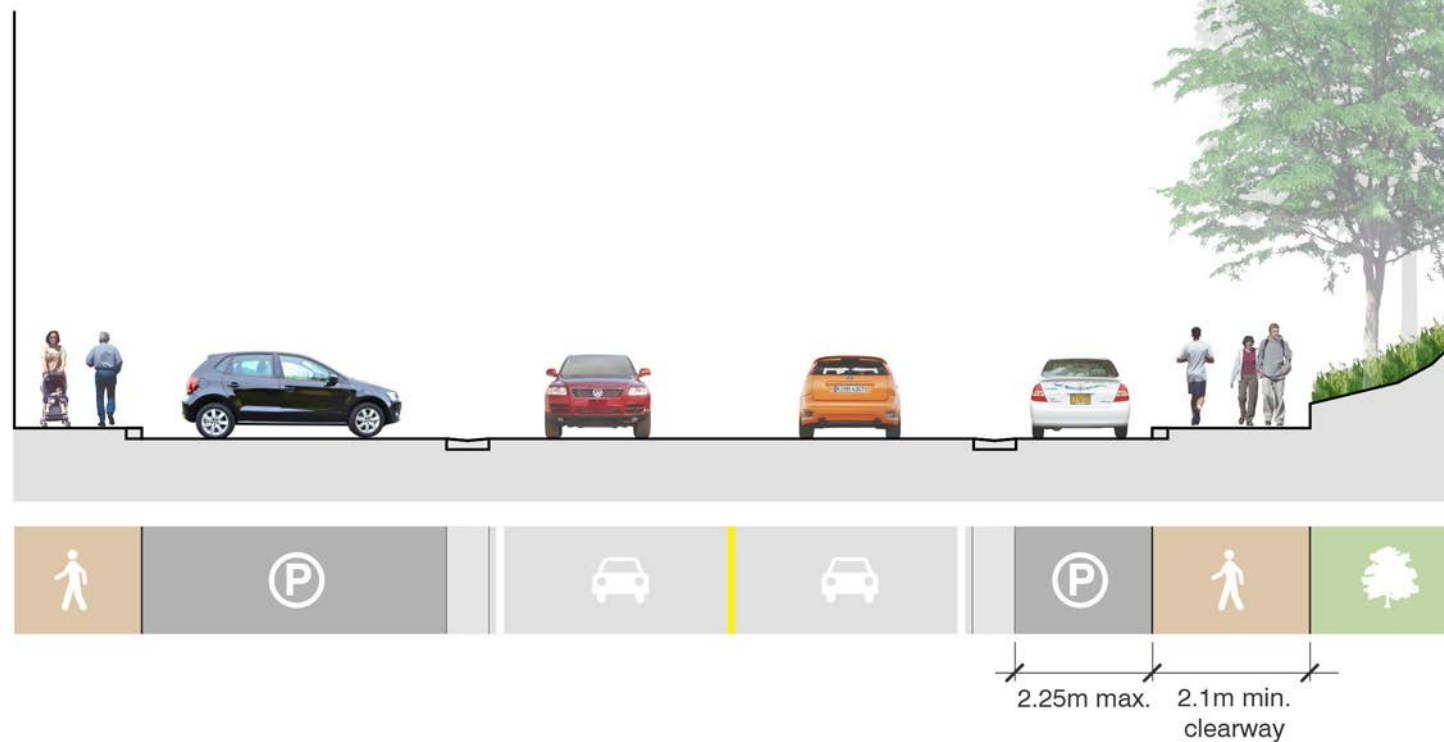
Muskoka chairs, benches and waste receptacles should be added.

Dark Sky Friendly Lighting

Dark sky friendly pedestrian scale lighting should be added.



Photomontage illustrating proposed improvement to Maple Street (Highway 118)



J Joseph Street (Highway 118)

Travel Lanes

No change is proposed to travel lane widths.

Streetscape

Additional trees and plantings should be added on private property wherever possible in consultation with adjacent owners.

Sidewalk

The existing sidewalk on the north/east side of Joseph Street should be widened where possible. A new sidewalk is proposed on the south/west side of Joseph Street, subject to the following guidelines:

- Sidewalk should have a minimum clearway of 2.1 metres (wherever possible).
- Sidewalk material should be differentiated from the road surface material.
- Sidewalk treatment should cross all driveways, parking areas, and access roads that are not public streets.

- At intersections with public streets and highways pedestrian crossing lines should be painted across the intersection.

Crosswalks

No crosswalks are proposed in this area.

Site Furnishings

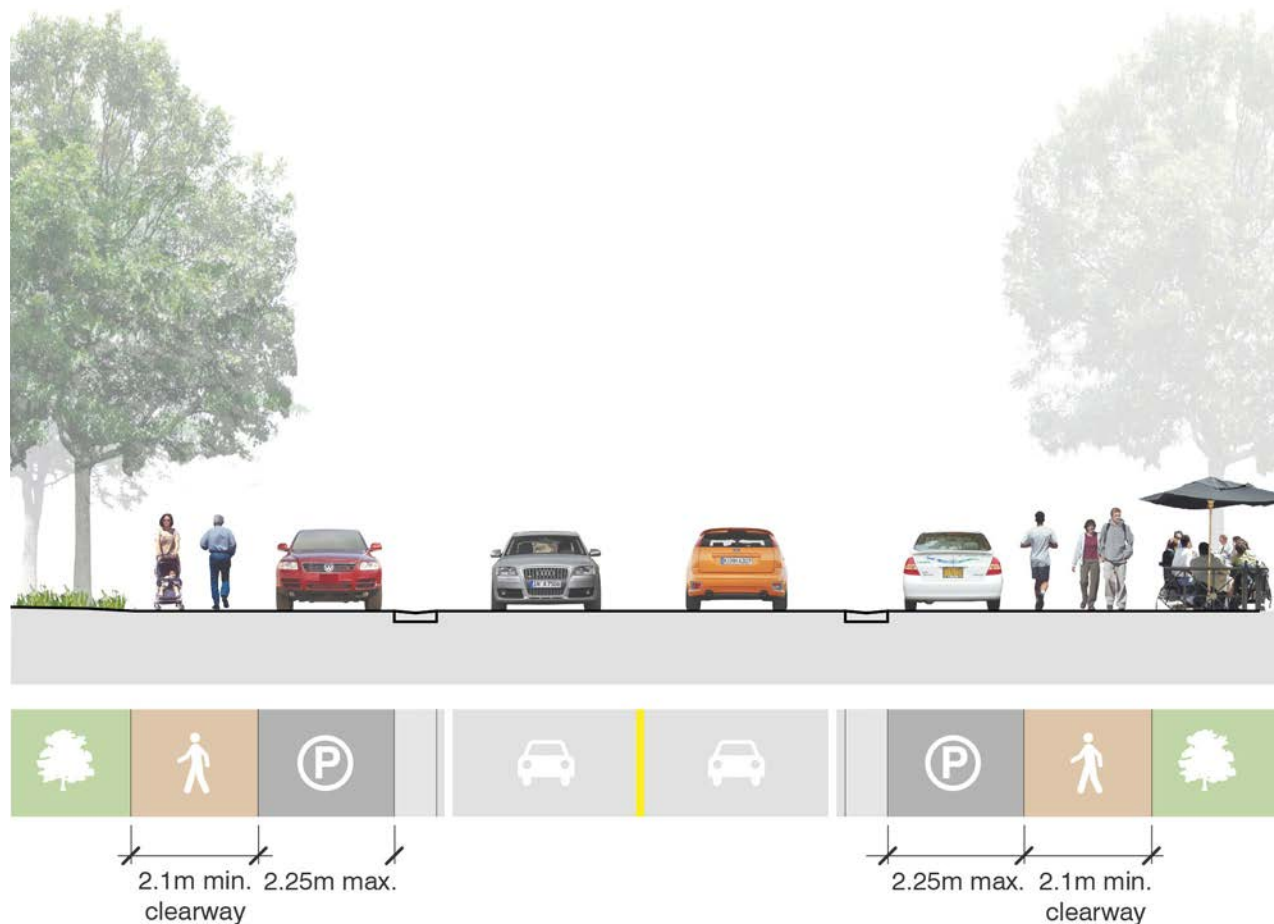
Muskoka chairs, benches and waste receptacles should be added.

Dark Sky Friendly Lighting

Dark sky friendly pedestrian scale lighting should be added.



Photomontage illustrating proposed improvement to Joseph Street (Highway 118)



K Joseph Street (Highway 118) at Bailey Street

Travel Lanes

No change is proposed to travel lane widths.

Streetscape

Additional trees and plantings should be added on private property wherever possible in consultation with adjacent owners.

Sidewalk

The existing sidewalk on the north/east side of Joseph Street should be widened where possible. A new sidewalk is proposed on the south side of Joseph Street, subject to the following guidelines:

- Sidewalk should have a minimum clearway of 2.1 metres (wherever possible).
- Sidewalk material should be differentiated from the road surface material.
- Sidewalk treatment should cross all driveways, parking areas, and access roads that are not public streets.

- At intersections with public streets and highways pedestrian crossing lines should be painted across the intersection.

Crosswalks

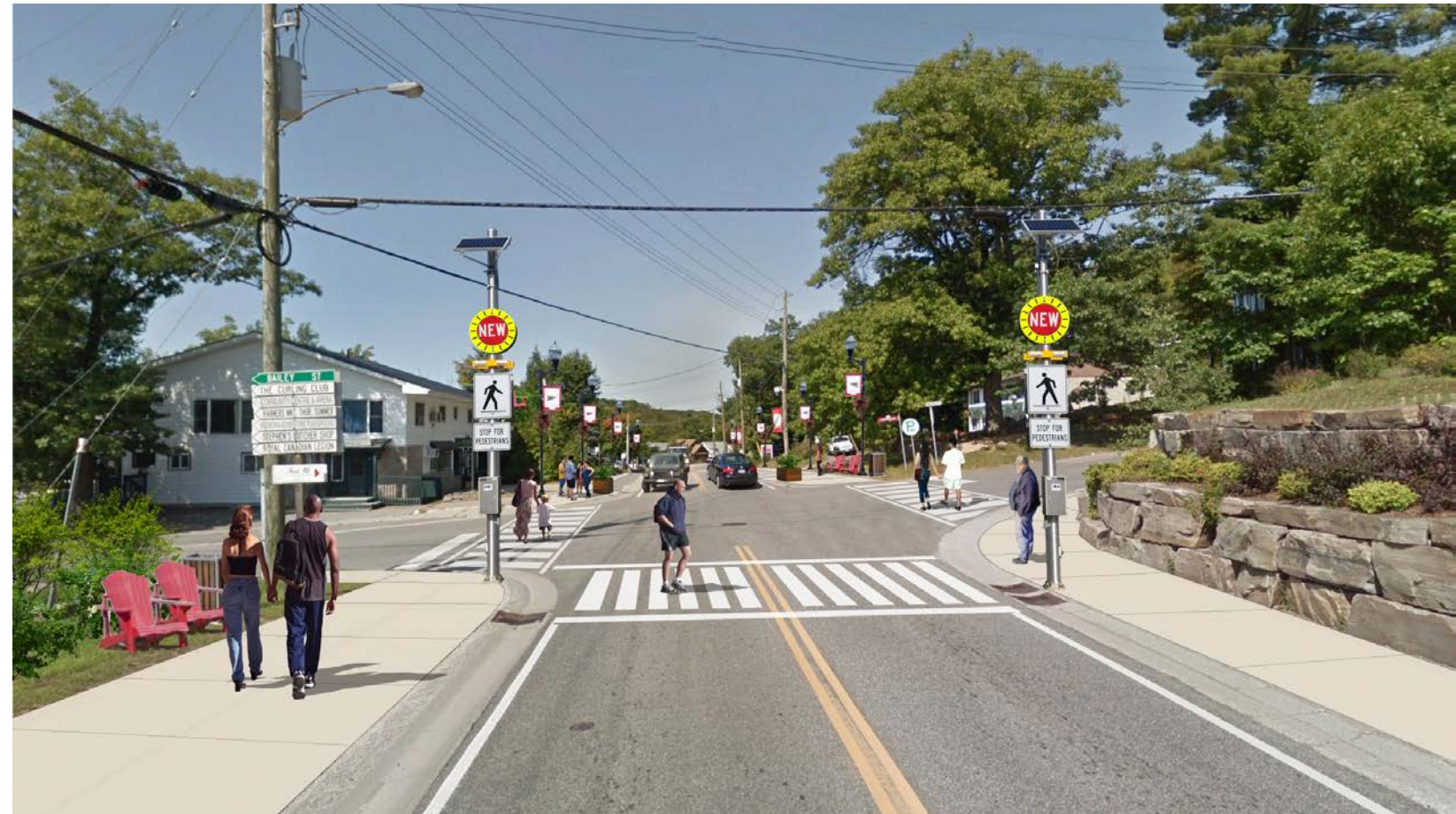
A pedestrian-activated crosswalk is proposed across Joseph Street/Highway 118 at Bailey Street/Stephen Road (not visible in illustration at right). The crosswalk should be highly visible, include warning lights when activated, and meet all requirements of the District of Muskoka and the Highway Traffic Act.

Site Furnishings

Muskoka chairs, benches and waste receptacles should be added.

Dark Sky Friendly Lighting

Dark sky friendly pedestrian scale lighting should be added.

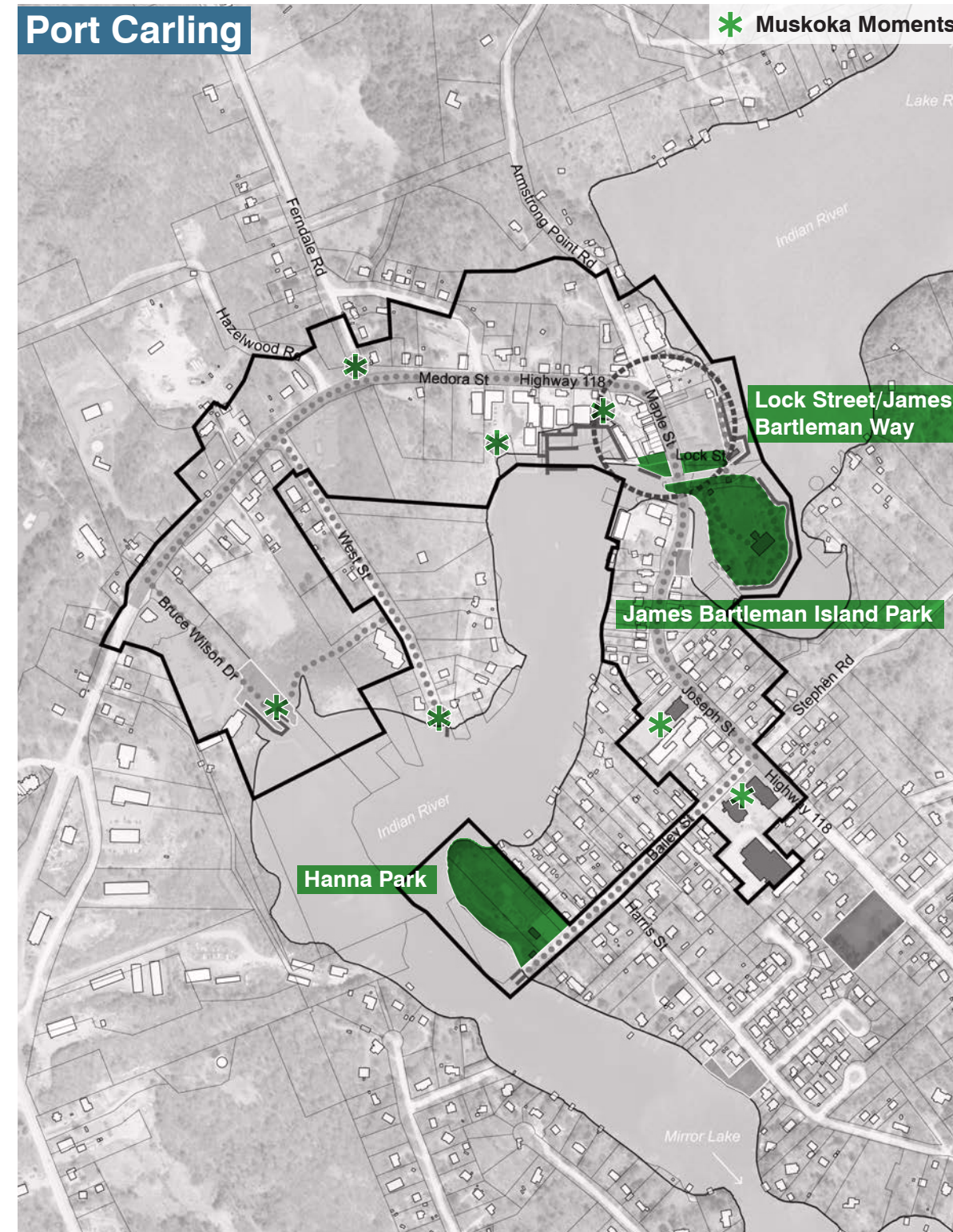


Photomontage illustrating proposed improvement to Joseph Street (Highway 118) at Bailey Street



Public Park Guidelines

The public park guidelines provide direction for enhancements to the key public spaces in Bala and Port Carling. The guidelines also suggest the location of Muskoka Moments.



Bala

Muskoka Lakes Sports Park

- Augment existing play facilities, skateboard park, parking, walking track and sports fields.
- Provide year round washrooms.
- Consider additional recreation facilities such as splash pad, games tables, pickle ball court, exercise stations, skating trail.
- Locate an Information Map for orientation to Bala and its businesses and other attractions.
- Provide a bike station.

Jaspén Park

- Augment existing swimming, play facilities, parking, changeroom and picnic pavilion.
- Provide year round washrooms.
- Consider additional recreation facilities such as exercise stations and beach volleyball.
- Locate an Information Map for orientation to Bala and its businesses and other attractions.

Windsor Park

- Augment existing boat tie up, swimming and parking.
- Provide year round washrooms.
- Consider additional recreation facilities such as games tables and exercise stations.
- Update the Information Map for orientation to Bala and its businesses and other attractions.

Muskoka Moments

- Provide a series of resting stops along a walking and cycling route.
- Include Interpretive signage and Information Map, locate “you are here”, nearby restaurants, cafes, interesting sites.
- Provide seating and planting/landscape features.
- Accommodate winter activities.
- Provide bike stations at key locations.



Bike Station



Map/Wayfinding



Exercise Station



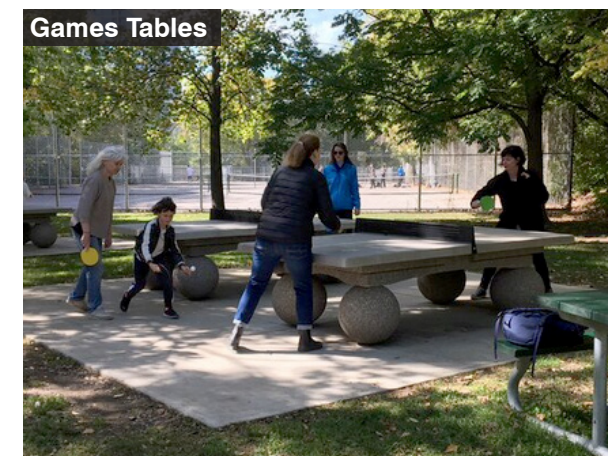
Seating



Skating Trail



Beach Volleyball



Games Tables



Signage/Wayfinding

Port Carling

Lock Street/James Bartleman Way

- Create a summer pedestrian-only space on James Bartleman Way in front of the mural and on Lock Street.
- Include special paving materials, tables and seating.
- Include planting/landscape features.
- Include a bike station.
- Include an Information Map for orientation to Port Carling, its businesses and attractions

James Bartleman Island Park

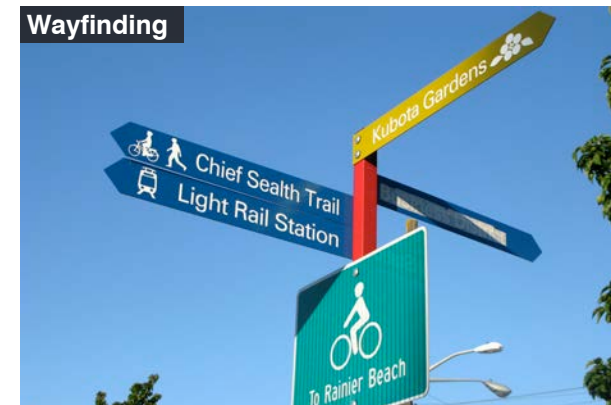
- Augment existing boat tie up and seating.
- Consider adding recreation facilities such as a playground, games tables and exercise stations.
- Consider adding an outdoor pavilion.
- Consider adding year round washrooms.
- Include an Information Map for orientation to Port Carling, its businesses and attractions

Hanna Park

- Augment existing boat tie up, swimming, playground, skating trail and parking.
- additional recreation facilities such as games tables and exercise stations.
- Provide rear round washrooms.
- Include an Information Map for orientation to Port Carling, its businesses and attractions.
- Include a bike station.

Muskoka Moments

- Include Interpretive signage and Information Map, locate “you are here”, nearby restaurants, cafes, interesting sites.
- Provide seating and planting/landscape features.
- Accommodate winter activities.
- Provide bike stations at key locations.



Photomontage of pedestrian-only space on James Bartleman Way

Elements to include in the Muskoka Moments



Illustration of the potential components of a Muskoka Moment

Considerations for Implementation

There are many influences on determining the implementation of improvements in Bala or Port Carling. There may be opportunities presented to “piggy back” with other capital projects of the District or Township, choices made in response to specific funding programs, a strategy to ‘sprinkle’ improvements across both urban centre, a strategy to focus on one or two key areas. Staff and Council will consider all of the variables and influences when making decisions on projects to implement.

Possibilities for immediate implementation include:

1. Bike racks/bike stations;
2. Signage and wayfinding;
3. Muskoka Moments (street furniture, planting);
4. Begin discussions with parties on approvals for priority areas such as crosswalks, boardwalks and gateway signage in Bala; and,
5. Begin discussions to convert James Bartleman Way as a pedestrian only space.