

HAZELWOOD TRAIL

HAZELWOOD RD, PORT CARLING

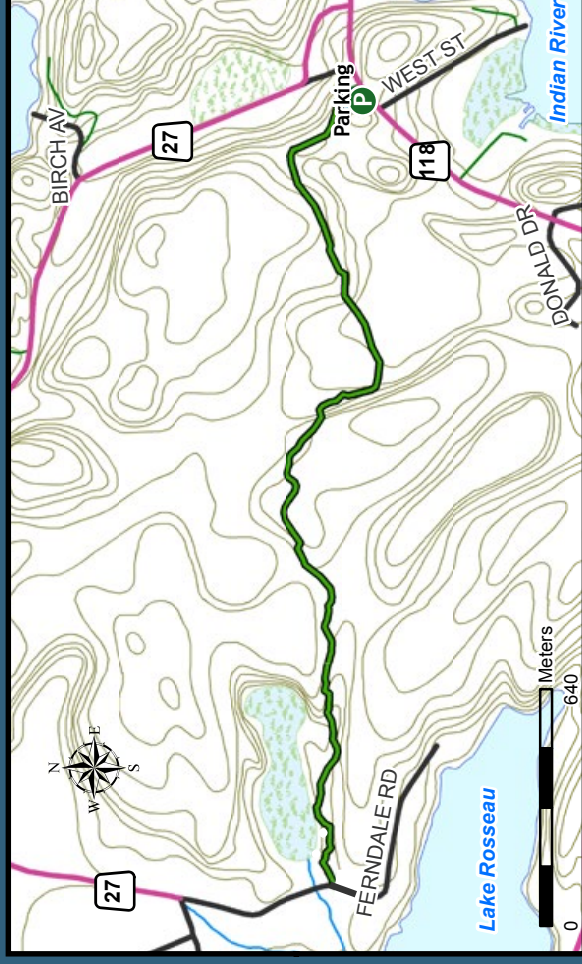
CLOSEST COMMUNITY: Port Carling
DIFFICULTY: Moderate
DISTANCE: 2.5km

ACCESS TO TRAIL / PARKING:

Travel west through the town of Port Carling. Just past Femdale Road and right before the top of the hill, turn right on Hazelwood Road. Follow this road to the end where you will find parking and the trail head.

TRAIL DESCRIPTION / KEY POINTS OF INTEREST:

The historic 2.5 km trail (5 km return) once linked Port Carling with Port Sandfield. The trail includes some moderate to steep climbs through a mature hardwood forest and passes between spectacular granite bluffs. Towards the end of the route, the trail runs beside a large beaver pond, well known for its bird life.



SKELETON LAKE FISH HATCHERY TRAIL

FISH HATCHERY RD, UTTERSON

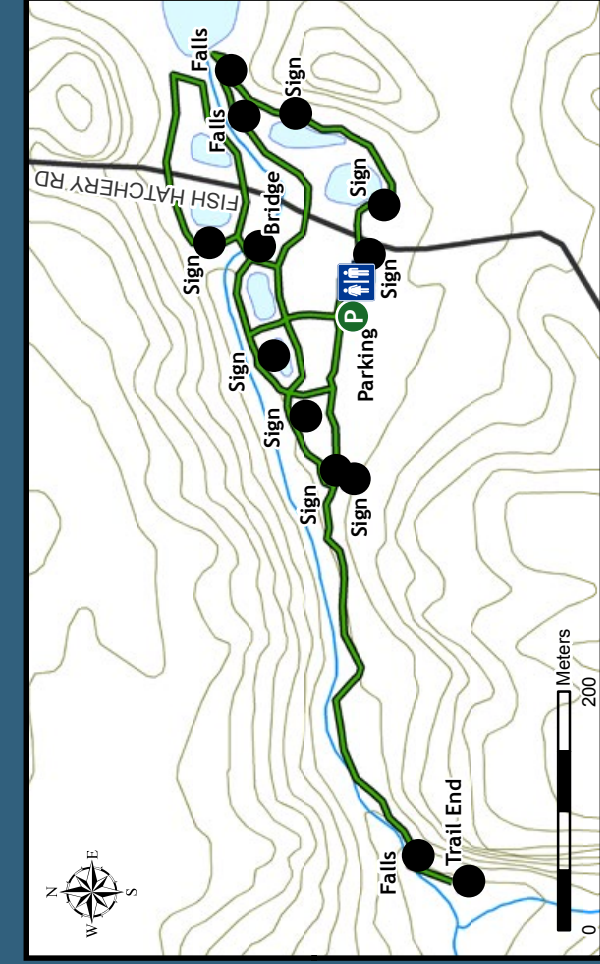
CLOSEST COMMUNITY: Windermere
DIFFICULTY: Easy
DISTANCE: 1km

ACCESS TO TRAIL / PARKING:

Take District Road 4 north of Bracebridge onto Hwy 141 west and then to Fish Hatchery Rd. Parking is available at Fish Hatchery Park, 1.3 km past Warrt Public School.

TRAIL DESCRIPTION / KEY POINTS OF INTEREST:

The trail winds past the hatchery ponds, which have now been naturalized and along the river, which flows from Skeleton Lake. The trail passes by several habitats: meadows, deciduous forests, flood plain forests, river shorelines and wetlands. Skeleton Lake Trail also includes views of small waterfalls and rapids. Interpretive signs offer information and illustrations on different habitats, flora and fauna of the area, with advice on conservation techniques that individuals can use to preserve the natural heritage of Muskoka.



RAYMOND TRAIL

SKELETON LAKE ROAD 1, RAYMOND

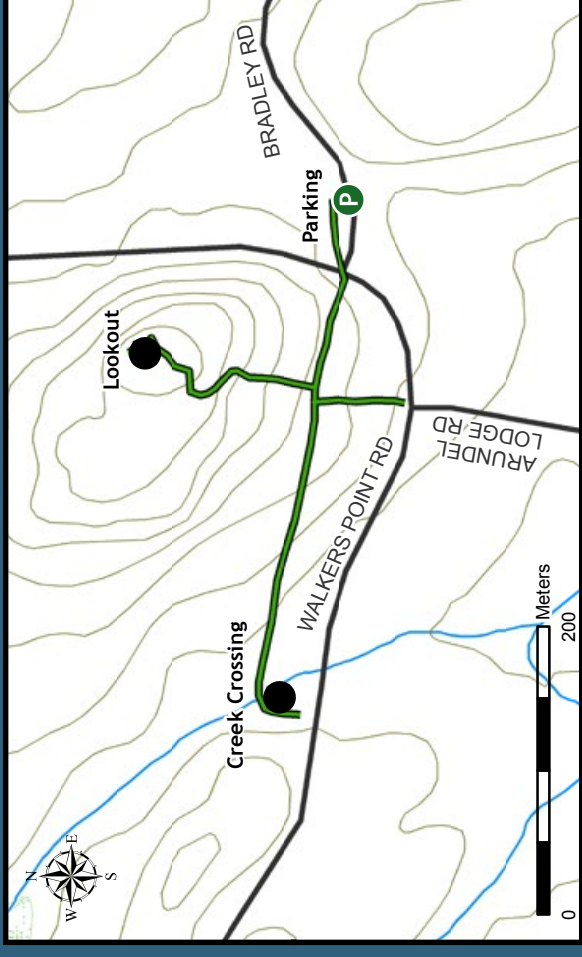
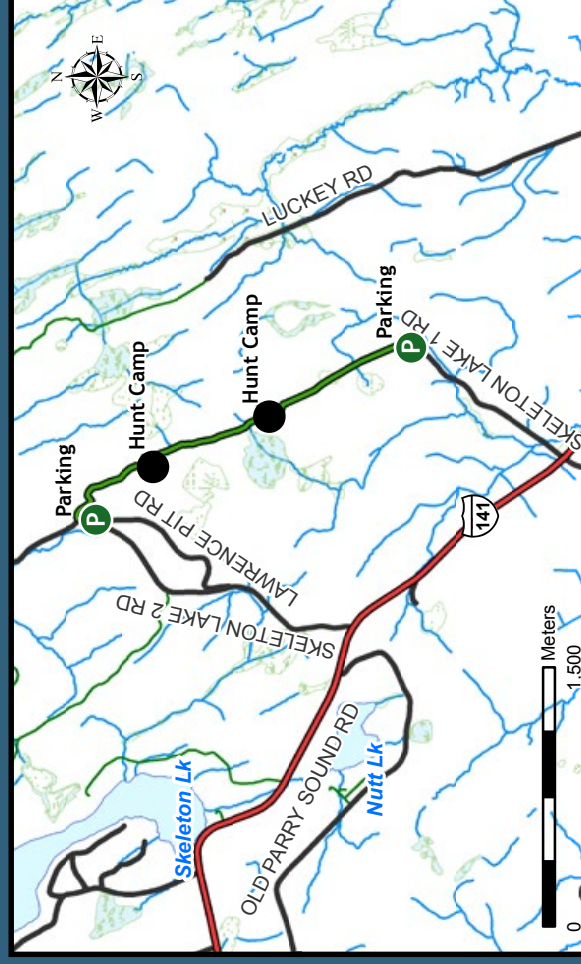
CLOSEST COMMUNITY: Raymond
DIFFICULTY: Moderate
DISTANCE: 2km/4km roundtrip

ACCESS TO TRAIL / PARKING:

Take Hwy #141 to Skeleton Lake Road #1, one half kilometer past the Raymond Store. Park at the end of the gravel portion careful not to block to road.

TRAIL DESCRIPTION / KEY POINTS OF INTEREST:

The Raymond Trail follows the historic colonization route from the old Parry Sound Road to Skeleton Lake. The trail, with moderate hills, passes through field and forest. In places, you can still see the logs of the corduroy road, laid down to help settlers over the boggy sections.



WALKER'S POINT LOOKOUT TRAIL

WALKER'S POINT RD, WALKER'S POINT

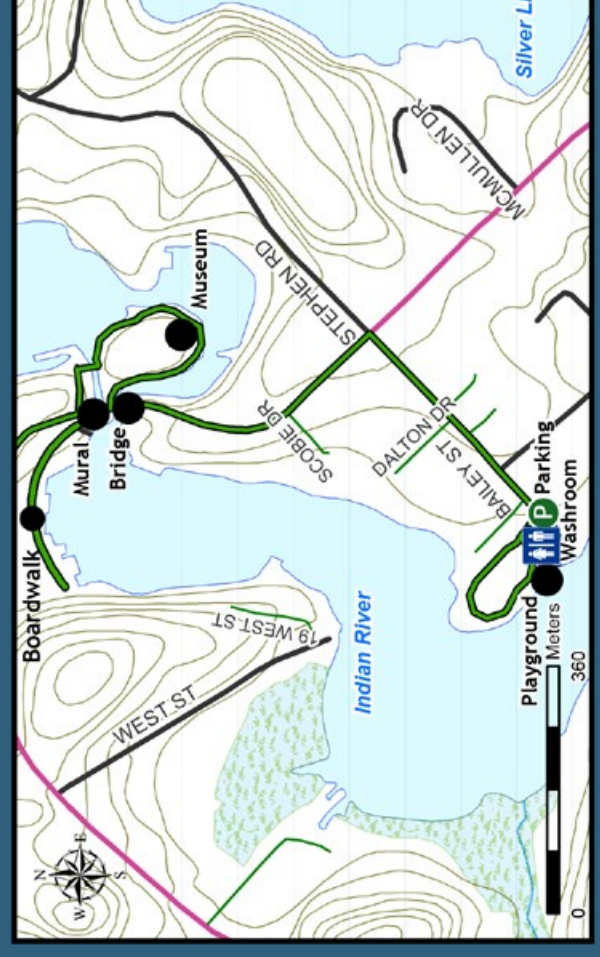
CLOSEST COMMUNITY: Walker's Point
DIFFICULTY: Moderate
DISTANCE: 1km

ACCESS TO TRAIL / PARKING:

Take Walker's Point Road from Hwy 169. Follow road until intersection with Bradley Road.

TRAIL DESCRIPTION / KEY POINTS OF INTEREST:

Walker's Point Lookout is well known locally for its wonderful view of Lake Muskoka. This short 1 km trail offers the best of Muskoka Lakes, highlighting rocks, trees and a great view of the water.



PORT CARLING MURAL WALK

BAILEY STREET, PORT CARLING

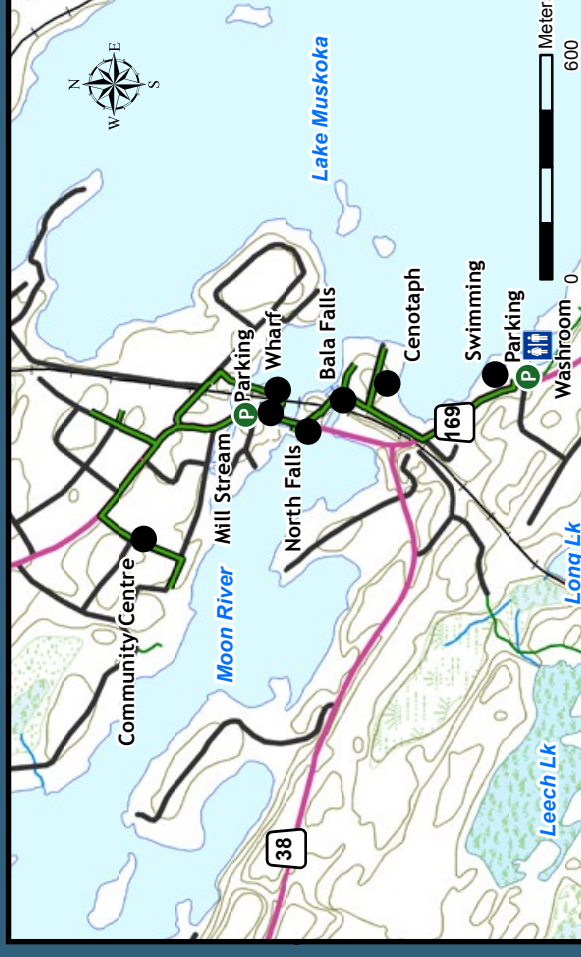
CLOSEST COMMUNITY: Port Carling
DIFFICULTY: Easy
DISTANCE: 2.5km

ACCESS TO TRAIL / PARKING:

Take Hwy 118 to Port Carling. Turn onto Bailey Street to the end. Parking is at Hanna Park.

TRAIL DESCRIPTION / KEY POINTS OF INTEREST:

Water surrounds you on this trek through the picturesque town of Port Carling situated at the "hub of the lakes". This urban route offers many creative ways to enjoy a walk. Stop and view the Port Carling mural as "The Wall Looks Back". If shopping suits your fancy visit the many shops all along the way. Enjoy!



BALA HISTORIC WALK

3070 MUSKOKA DISTRICT RD 169, BALA

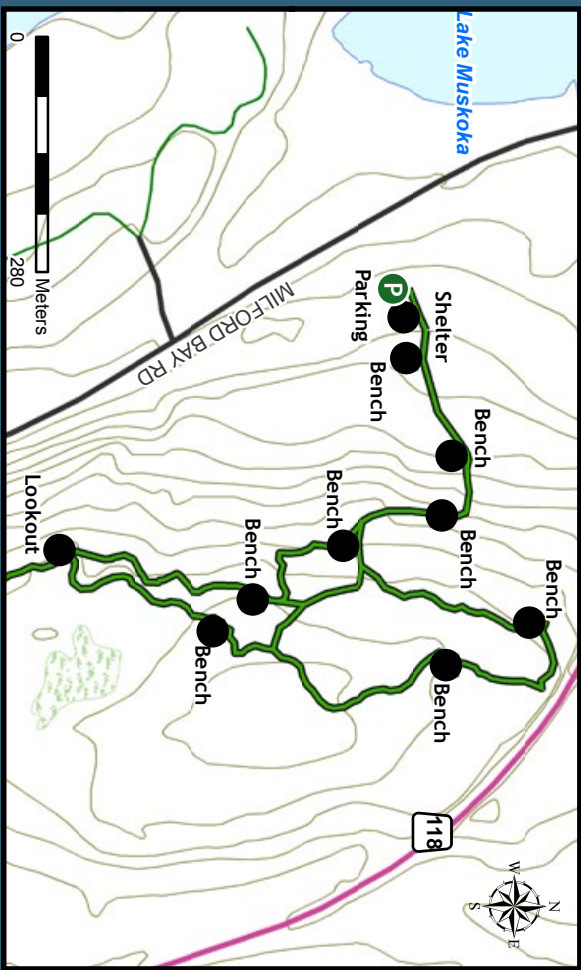
CLOSEST COMMUNITY: Bala
DIFFICULTY: Easy
DISTANCE: 4.5km

ACCESS TO TRAIL / PARKING:

The walk starts at Windsor Park but of course you may start and end anywhere you like.

TRAIL DESCRIPTION / KEY POINTS OF INTEREST:

The Town of Bala consists of three islands interconnected by bridges over beautiful waterfalls. There is a spectacular view of the Moon River and the falls on this walk. These falls, the South Falls, run with water from Lakes Muskoka, Rosseau, and Joseph funneling through Bala enroute to Georgian Bay. You can also enjoy a visit to the Lucy/Maud Montgomery Museum. This is just a taste of the many historical sites that are along this self-guided walk of historic Bala. Come and enjoy the walk, and a bit of Bala hospitality.



HUCKLEBERRY ROCK LOOKOUT TRAIL
 1057 MILFORD BAY RD., MILFORD BAY

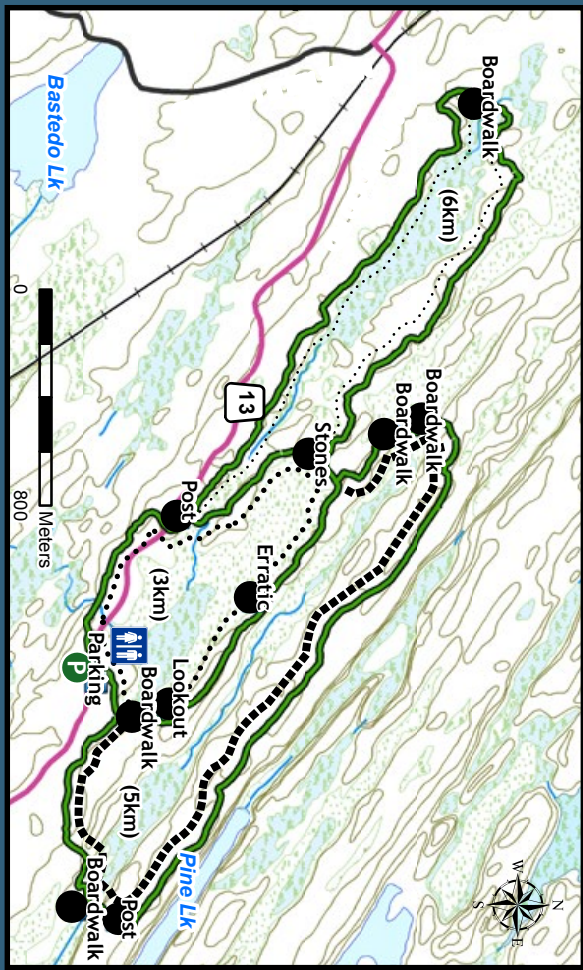
CLOSEST COMMUNITY: Milford Bay

DIFFICULTY: Moderate

DISTANCE: 2.5km

ACCESS TO TRAIL / PARKING: Park at the new parking lot across from the golf course on Milford Bay Road. Milford Bay Rd. is off of Hwy 118 half way between Bracebridge and Port Carling.

TRAIL DESCRIPTION / KEY POINTS OF INTEREST: Huckleberrry Rock has been well known locally for over 100 years as a magnificent scenic lookout. Rocks on this trail are some of the oldest in the world, well over a billion years old. The effects of glaciation, timber harvesting, erosion and fire have removed the thin mantle of soil exposing the surface of the pink granite rock.



TORRANCE BARRENS TRAIL
 SOUTHWOOD RD., TORRANCE

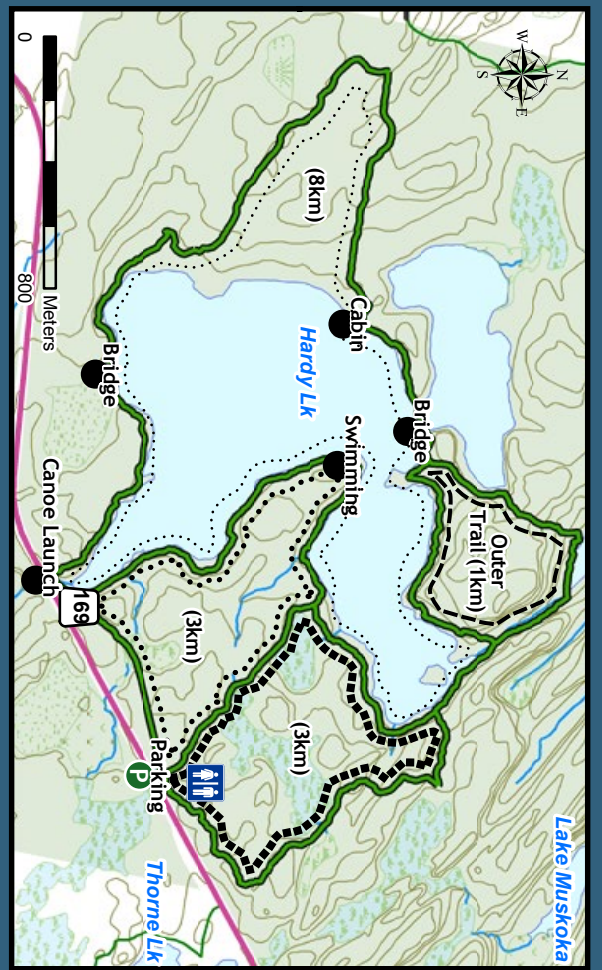
CLOSEST COMMUNITY: Torrance

DIFFICULTY: Difficult

DISTANCE: 3km, 5km, and 6km

ACCESS TO TRAIL / PARKING: Take Muskoka Road 169 north from Gravenhurst or south from Bala. Turn south on Southwood Road (Muskoka Road 13) and travel 7 km to the Torrance Barrens sign.

TRAIL DESCRIPTION / KEY POINTS OF INTEREST: Encompassing almost 5000 acres, the Torrance Barrens Conservation Reserve is one of the most striking geological areas in Muskoka. The lunar landscape of the Barrens is characterized by low ridges of pre-cambrian bedrock separated by wetlands and peat-filled hollows, scattered boulders and even a little soil. The Barrens is also an ideal place to view the night skies.



HARDY LAKE PROVINCIAL PARK TRAIL
 HIGHWAY 169, TORRANCE

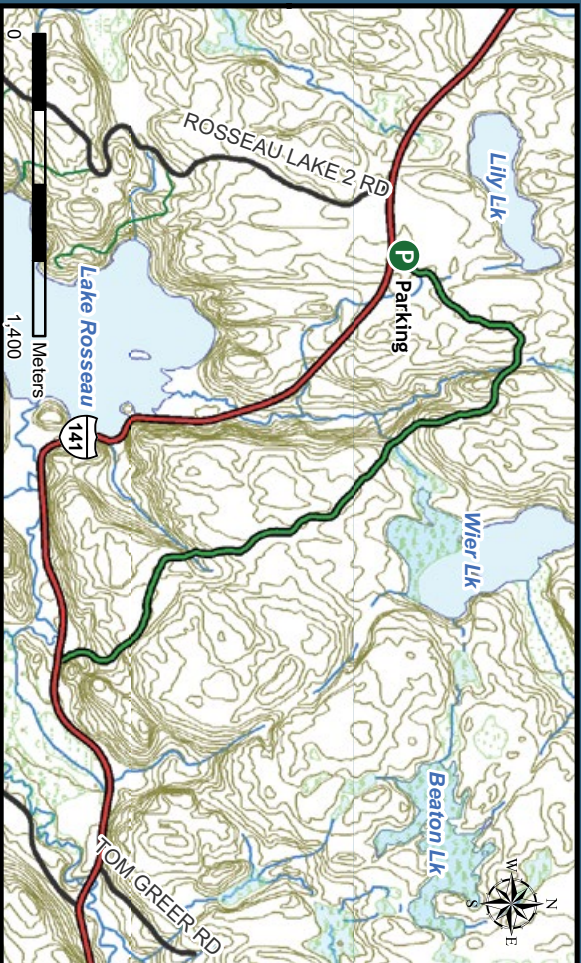
CLOSEST COMMUNITY: Torrance

DIFFICULTY: Moderate to Difficult

DISTANCE: 3km and 8km

ACCESS TO TRAIL / PARKING: The parking lot is found off of Muskoka Road 169, 1 km west from Walkers Point Road.

TRAIL DESCRIPTION / KEY POINTS OF INTEREST: Hardy Lake Provincial Park provides hiking access to the shores of both Hardy Lake and Lake Muskoka, two of the most picturesque and rugged shorelines, characteristic of the lake-studded pre-cambrian rock landscapes of Muskoka.



WEIR LAKE TRAIL
 HIGHWAY 141, BENT RIVER

CLOSEST COMMUNITY: Bent River

DIFFICULTY: Moderate

DISTANCE: 3.6km

ACCESS TO TRAIL / PARKING: The parking lot is located off Highway 141 near Bent River.

TRAIL DESCRIPTION / KEY POINTS OF INTEREST: There are several steep ups and downs along this 3.6 km trail which leads you through hardwood forest, over creeks, and pass remnants of the first telephone line in the area.



TRAIL LEGEND

	KING'S HIGHWAY		RAILWAY
	HIGHWAY		STRUCTURE
	ROAD		PARKING
	HIKING TRAIL		WASHROOM

TRAIL BLAZE SIGNS
 SIGNS ARE MARKED IN WHITE FOR VISIBILITY

	CONTINUE STRAIGHT		INTERSECTION		LEFT TURN		RIGHT TURN
--	-------------------	--	--------------	--	-----------	--	------------

NO MECHANIZED TRAVEL

TOWNSHIP OF MUSKOKA
Lakes
TRAIL GUIDE
 #MUSKOKALAKESTRAILS
 #THISISTHELIFE

Huckleberrry Rock Lookout Trail

THE TOWNSHIP OF MUSKOKA LAKES
 P.O. BOX 129, 1 BAILEY ST. PORT CARLING, ON, POB 1J0
 705-765-3156
WWW.MUSKOKALAKES.CA
 @MUSKOKALAKESTWP